

Gross Power
298 kW (400HP) at 2,100rpm

Net Power
295 kW (395HP) at 2,100rpm

Bucket Capacity
1.38m³~3.2m³

Operating Weight
50,690kg (111,752 lb)

HX480A L

With EU Stage V Engine Installed



▲ HYUNDAI CONSTRUCTION EQUIPMENT

Head Office(Sales Office)

3F, Bundang First Tower, 55 Bundang-ro, Bundang-gu, Seongnam-si, Gyeonggi-do, 13591, Korea

Americas Operation : Hyundai Construction Equipment Americas, Inc.

6100 Atlantic Boulevard Norcross Ga 30071 U.S.A
TEL (1) 847-678-823-7802 FAX (1) 847-678-823-7778

Europe Operation : Hyundai Construction Equipment Europe N.V.

Hyundailaan 4,
3980 Tessenderlo, Belgium
TEL (32) 14-56-2200 FAX (32) 14-59-3405

PLEASE CONTACT



WHAT'S NEWEST AND BEST

THE BEST PRODUCTIVITY AND FUEL EFFICIENCY

- EU STAGE V Engine **NEW**
- Eco Report **NEW**
- Lifting Mode **NEW**
- IPC (Intelligent Power Control) **Upgrade**
- Fuel Rate Information
- Eco Gauge
- Automatic Engine Shutdown

NEW EXTERIOR DESIGN FOR ROBUSTNESS AND SAFETY

- Side Protector **Option**
- ROPS/FOG/FOPS **Option**
- Reinforced Durability of Upper and Lower Structure and Attachments
- Durable Cooling Module
- Reinforced Pin, Bush and Polymer Shim
- Wear Resistant Cover Plate

EASY CONTROL AND COMFORTABLE OPERATION

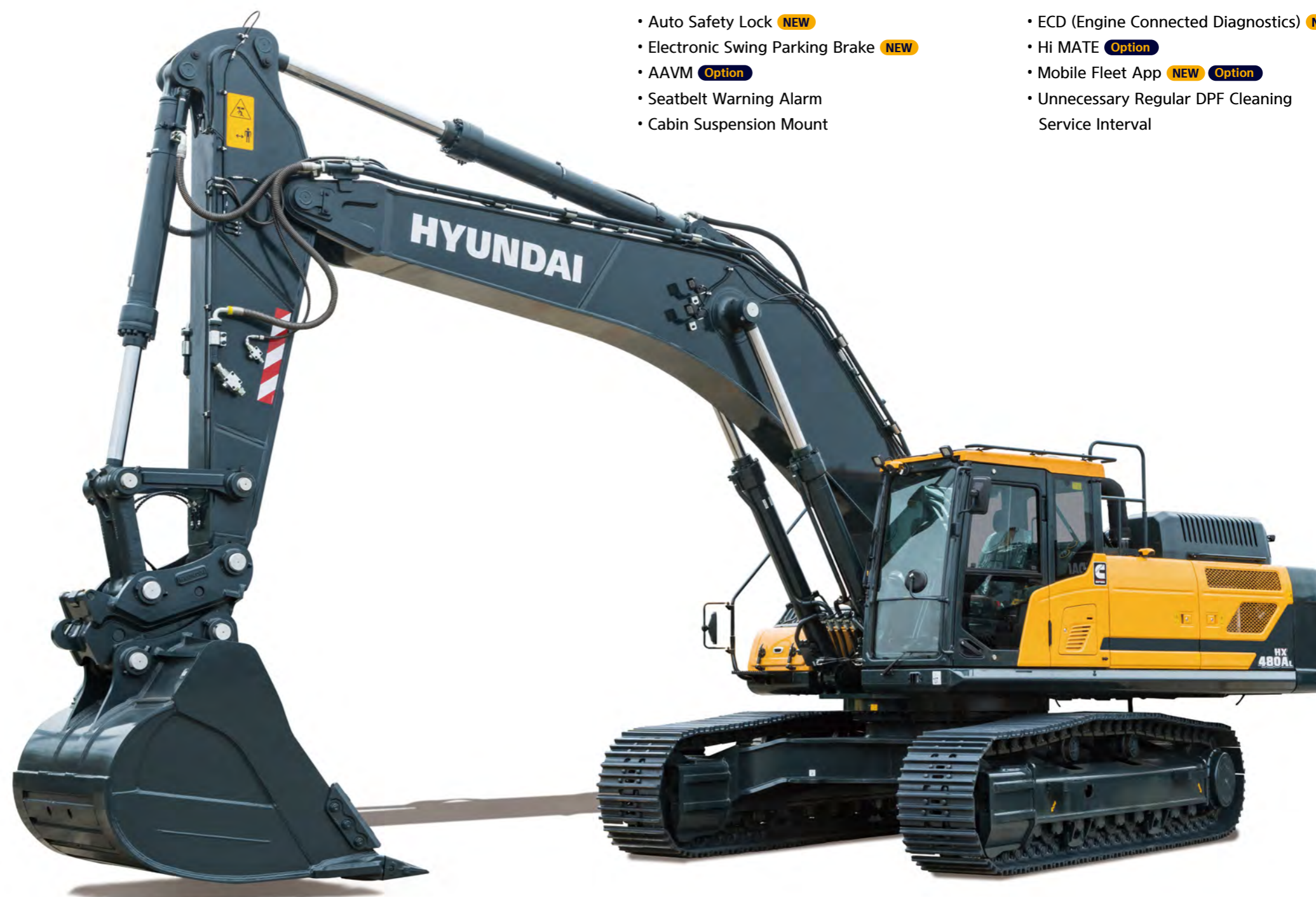
- Visibility and Handle Improvement **NEW**
- Key On Init Work Mode **NEW**
- One Pedal Travel Straight **Option**
- Proportional Auxiliary Hydraulic System **Option**
- Fine(Cushion/Free) Swing Control **Option**
- Integrated Audio System **Option**
- Intelligent & Wide Cluster
- Jog Dial Module
- OME (Owner Menu Editing)

THE ULTIMATE SAFE ENVIRONMENT

- Auto Safety Lock **NEW**
- Electronic Swing Parking Brake **NEW**
- AAVM **Option**
- Seatbelt Warning Alarm
- Cabin Suspension Mount

SERVICEABILITY AND TELEMATICS

- ECD (Engine Connected Diagnostics) **NEW** **Option**
- Hi MATE **Option**
- Mobile Fleet App **NEW** **Option**
- Unnecessary Regular DPF Cleaning Service Interval





THE BEST PRODUCTIVITY AND FUEL EFFICIENCY

HX A Series is equipped with eco-friendly, high-performance engines that meet the EU Stage V emission requirements.

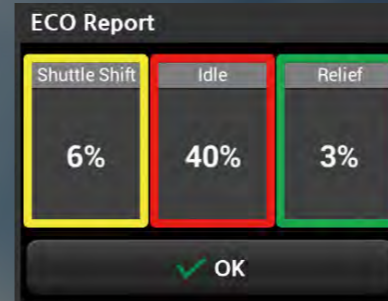
BETTER FUEL-EFFICIENCY
(Compared to HX Series)



ENVIRONMENTALLY FRIENDLY FUEL EFFICIENCY

Eco Report **NEW**

It reports the excavator's inefficient operation status and help improving operator's working habit.



Fuel Rate Information

Fuel information is displayed as average rate and latest fuel consumed for guiding to economy operating.



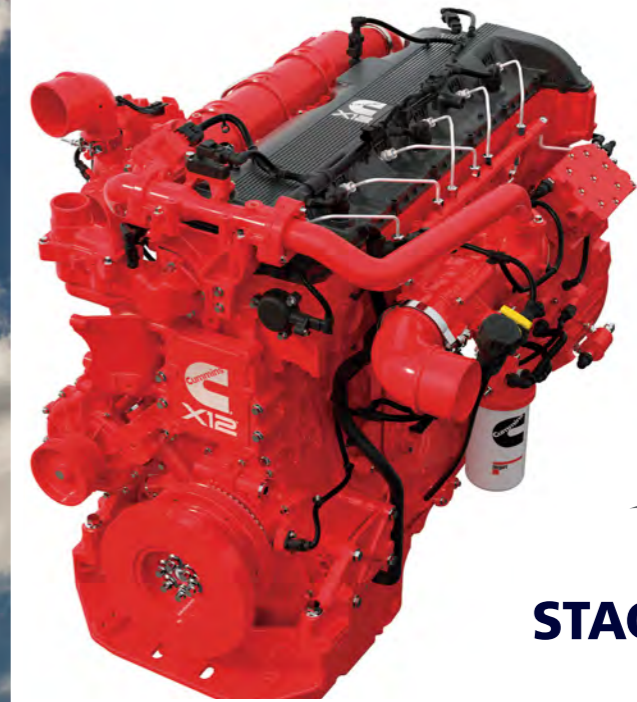
Eco Gauge

Gauge level changes in accordance with engine working load and color indicates fuel saving-operation status.



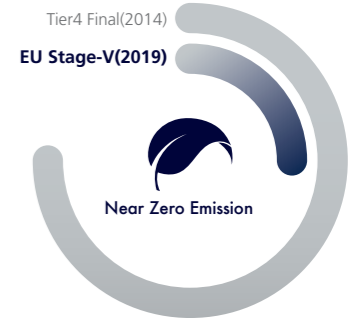
Automatic Engine Shutdown

Adjustable 'Automatic Engine Shutdown' significantly reduces idle time, overall operating hours and fuel consumption.



EU STAGE V Engine **NEW**

'Cummins X12' engine meeting Euro Stage V emission regulations is designed for maximum productivity and fuel efficiency.



IPC (Intelligent Power Control) **Upgrade**

HX A Series adopts the upgraded IPC system. It is able to optimize pump flow rate and power at the various working condition through the individual pump control. Furthermore, optimized design of MCV and pipe line minimizes energy loss such as conflux and throttle loss.



Lifting Mode

This work mode improves fine operability and lift capability through RPM reduction, power boost activation and pump flow control.



We make the best performance in rough working conditions without any unsureness with trustworthy HX480A L.



HX A Series is equipment with eco-friendly, high-performance engines that meet the EU Stage V emission requirement. Become a true leader on the ground with HX Series.

Removal CWT



Reinforced Durability of Upper and Lower Structure and Attachments

The upper and lower structure and attachments of HX A Series have higher durability than demanded on the site, as proven through numerous tests including road tests and virtual simulation. The wear resistance of the bucket has been improved by use of new material.



Durable Cooling Module

HX A Series has a durable cooling module that passed stringent tests, demonstrating the highest productivity in tough working environments.



Side Protector Option

Protect sides frame during operation in narrow area



NEW EXTERIOR DESIGN FOR ROBUSTNESS AND SAFETY

The true value of HX A Series lies in its durability and high productivity. The robust upper and lower frame structure can endure external shock and heavy work loads. Attachment performance has been proven through rigorous field testing. No matter how tough the working environment is, you can always rely on the HYUNDAI Excavator HX A Series.



1 Reinforced Pin, Bush and Polymer Shim

2 Wear Resistant Cover Plate

13%

CABIN SPACE FOR DRIVERS INCREASED BY

10 levels
5 levels

310mm
340mm

HYUNDAI

EASY CONTROL AND COMFORTABLE OPERATION

Many electronic functions are concentrated in the most convenient spot for operators to improve work efficiency. The highly-advanced infotainment system, a product of HCE's intensive information technology development, enables both productivity and comfort while working! HX A Series is designed with the operator in mind.

Intelligent & Wide Cluster

The 8" capacitive-type display (like smart-phone display) of HX A Series is delivering excellent legibility. The centralized switches on the display allow convenience of checking the urea level and temperature outside the cabin.

One Pedal Travel Straight **Option**

One Pedal Travel Straight is available for customers' convenience when long distance traveling or combination of attachment work with traveling is necessary.



Proportional Auxiliary Hydraulic System **Option**

Proportional control switch with better speed control helps operators to enlarge the operation convenience whenever they do time-consuming work.

Jog Dial Module

The integrated jog dial module applies to the accelerator, remote air conditioner controller and operation of the cluster, allowing convenient operation. In the event of failure of the jog dial module, the emergency mode is activated on the cluster to ensure fail-safe function.



Visibility and Handle Improvement **NEW**

Visibility through cabin door is improved and handle design on the cabin door is also improved and offers better convenient while operator get on and off the cabin.



Key On Init Work Mode **NEW**

Operator can maintain previously set about attachment mode when starting.



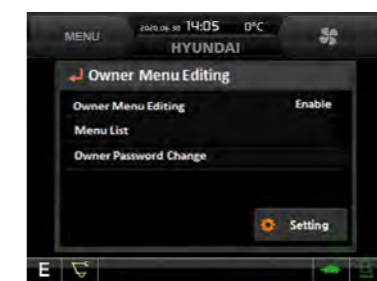
Integrated Audio System **Option**

The radio player with a USB-based MP3 player, an integrated Bluetooth hands-free feature, and a built-in microphone allow for phone calls while at work and in transit. The radio player is conveniently located on the right side of the operator to allow for improved access.



OME(Owner Menu Editing)

The owner of machine can restrict operators access the set of functions. In the menu, owner can set the list of the function to lock or unlock it. It is necessary to input the password to access the set of function.



Fine Swing Control **Option**

This option enables smooth movement at the start and stop of swing operation (Cushion Swing). In addition, it reduces the shaking of the weight when lifting operation (Free Swing).

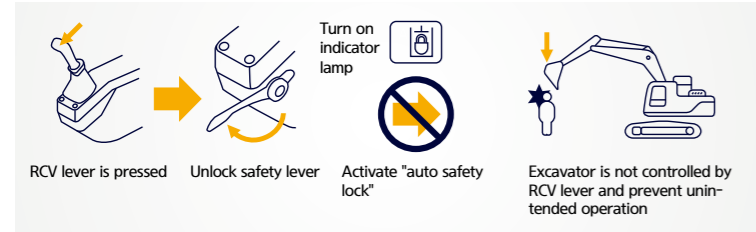
// HX480A L with advanced technology ensures our safety on a construction site. //



HX A Series excavators are products of HCE's spirit of initiative, creativity, and strong drive. HCE engineers, who are the best in the industry, have worked tirelessly to offer a zero-defect product. The new HX A Series reflects customers' needs in the field gleaned by thorough monitoring.

Auto Safety Lock **NEW**

It prevents unintended operation. If operator unlock safety lever when RCV lever is pressed, excavator is not controlled by RCV lever.



AAVM(Advanced Around View Monitoring) Camera System

Option

HX A Series has a state-of-the-art AAVM video camera system to secure field of vision for operators in all directions, thereby preventing accidents. Operators can easily check the workplace in the front and rear and to the right and left.

- **AAVM**(Advanced Around View Monitoring) : Secure field of vision in all directions by ten views including 3D bird's eye view and 2D/4CH view.
- **IMOD**(Intelligent Moving Object Detection) : Inform when pedestrians or dangerous objects are moving around the machine waiting for work.



Electronic Swing Parking System

An electronic valve and control system is applied to improve safety and utilization. The opening and closing time of the swing brake valve is controlled according to the sensing and control system.

Seatbelt Warning Alarm

If the seatbelt is not buckled when the ignition key is turned, an alarm is triggered in intervals along with a continuous visual alert. This emphasizes our priority for operator safety.

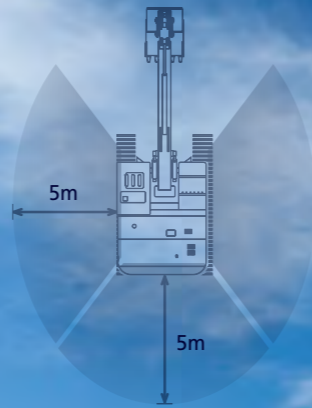
Cabin Suspension Mount

With a low-vibration design by the coil spring and damper inside the mount, the cab suspension mount of HX A Series reduces noise inside the cabin and improves durability, providing a comfortable operation space that lessens operators' fatigue.



THE ULTIMATE SAFE ENVIRONMENT

The true value of HX A Series lies in its durability. The robust frame structure and the attachments show the real value of HX A Series in tough working environments and promise higher productivity.



*Photo may include optional equipment.



SERVICEABILITY AND TELEMATICS

IoT / ICT / AI-based digital technology.
Creating a smart construction site. Maximizes connectivity, productivity, and safety for successful businesses.



Photo may include optional equipment.

Hi MATE

Option

IT'S CONVENIENT, EASY AND VALUABLE

Hi MATE Hyundai's newly developed remote management system, utilizes GPS-satellite technology to provide customers with the highest level of service and product support available. Hi MATE enables users to remotely evaluate machine performance, access diagnostic information, and verify machine locations at the touch of a button.

WHAT IS BENEFITS



Increase Productivity

It helps you operate machines in efficient. You can check the difference between total engine hours and actual working hours. See how productive your machines are and plan any required cost saving solutions. Hi MATE offers working information such as working / idling hours, fuel consumption and rate.



Convenient and Easy Monitoring

There is nothing much to do to monitor your machines. Just log on to the Hi MATE website or mobile application. Hi MATE allows you to watch your machines whenever and wherever you are.



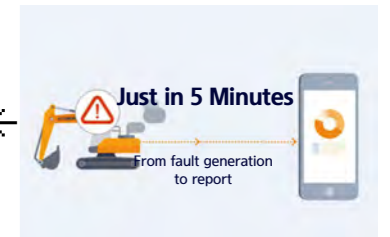
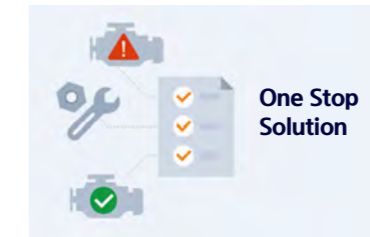
Security

Protect your machines from theft or unauthorized usage with Hi MATE. If the machine moves out of the Geofence boundary, you will get alerts.

ECD(Engine Connected Diagnostics) **NEW** Option

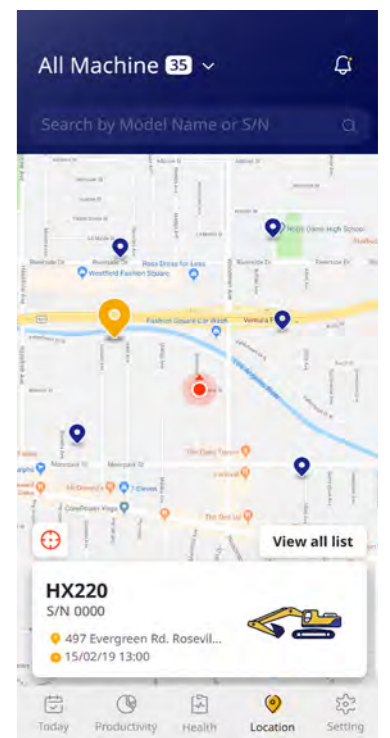
ECD will support the after sales technicians and dealers with a diagnostics report (via e-mail, mobile, app or Hi MATE) on the engine performance. This will help after sales technicians arrive on site with the necessary tools and parts to fix troubles in one visit. ECD is an integrated remote diagnostics service between Cummins cloud and Hi MATE cloud.

We are all connected



Mobile Fleet App. **NEW** Option

The new Mobile App is optimized to fleet management. It provides productivity, health insights based on telematics technology and enables fleet owner just focus on most wanted equipment in view of economical usage, utilization, fault codes and maintenance.



'Hi MATE Fleet Manager' App

SPECIFICATIONS

ENGINE

Maker / Model	CUMMINS / X12
Type	6 cylinder, water cooled, 4-cycle, turbocharged charge air cooled, direct injection, electronic controlled diesel engine.
Gross Power	298 kW (400 hp) at 2,100 rpm
Net Power	295 kW (395 hp) at 2,100 rpm
Max. Power	300 kW (402 hp) at 1,800 rpm
Peak Torque	1,898 N · m (1,400 lb-ft) at 1,400 rpm
Displacement	11.8 ℓ (720 cu in)
Operating Altitude (w/o derate)	2,000 m (6,562 ft)

HYDRAULIC SYSTEM

MAIN PUMP

Type	Variable displacement axis piston pumps
Max. Flow	2 × 394 lpm (104.0 US gpm / 86.7 UK gpm) 1 × 23.9 lpm (6.3 US gpm / 5.3 UK gpm)
Sub-Pump For Pilot Circuit	Gear pump

Cross-sensing and fuel saving pump system.

HYDRAULIC MOTORS

Travel	Two speed axial pistons motor with brake valve and parking brake
Swing	Axial piston motor with automatic brake

RELIEF VALVE SETTING

Implement Circuits	330 kgf/cm ² (4,694psi)
Travel	360 kgf/cm ² (5,120psi)
Power Boost (Boom, Arm, Bucket)	360 kgf/cm ² (5,120psi)
Swing Circuit	285 kgf/cm ² (4,053psi)
Pilot Circuit	40 kgf/cm ² (569 psi)
Service Valve	Installed

HYDRAULIC CYLINDERS

No. of Cylinder	Boom Ø170 × 1,580 mm
Bore X Stroke	Arm Ø190 × 1,820 mm Bucket Ø160 × 1,370 mm

DRIVES & BRAKES

Drive Method	Fully hydrostatic type
Drive Motor	Axial piston motor, in-shoe design
Reduction System	Planetary reduction gear
Max. Drawbar Pull	39,674 kgf (87,466 lbf)
Max. Travel Speed (High / Low)	3.3 km/hr (2.1 mph) / 5.3 km/hr (3.3 mph)
Gradeability	35° (70%)
Parking Brake	Multi wet disc

CONTROL

Pilot pressure operated joysticks and pedals with detachable lever provide almost effortless and fatigueless operation.

Pilot Control	Two joysticks with one safety lever (LH) : Swing and arm, (RH) : Boom and bucket (ISO)
Traveling and Steering	Two levers with pedals
Engine Throttle	Electric, dial type

SWING SYSTEM

Swing Motor	Axial piston motor
Swing Reduction	Planetary gear reduction
Swing Bearing Lubrication	Grease-bathed
Swing Brake	Multi wet disc
Swing Speed	9.0 rpm

COOLANT & LUBRICANT CAPACITY

	liter	US gal	UK gal
Fuel Tank	600	158.4	131.9
Engine Coolant	43	11.3	9.4
Engine Oil	34	9.0	7.5
Swing Device	7	1.8	1.5
Final Drive (Each)	13	3.4	2.9
Hydraulic System (Including Tank)	499	131.7	109.7
Hydraulic Tank	275	72.6	60.4
Def/Adblue®	70	18.4	15.3

UNDERCARRIAGE

The X-leg type center frame is integrally welded with reinforced box-section track frames. The undercarriage includes lubricated rollers, idlers, track adjusters with shock absorbing springs and sprockets, and a track chain with double or triple grouser shoes.

Center Frame	X - Leg Type
Track Frame	Pentagonal Box Type
No. of Shoes on Each Side	53 EA
No. of Carrier Roller on Each Side	2 EA
No. of Track Roller on Each Side	9 EA
No. of Rail Guard on Each Side	2 EA

OPERATING WEIGHT (APPROXIMATE)

Operating weight, including 7,060mm (23' 2") boom, 3,380mm (11' 1") arm, SAE heaped 2.2m³ (2.88 yd³) bucket, lubricant, coolant, full fuel tank, full hydraulic tank, and all standard equipments.

OPERATING WEIGHT

Shoes		Operating Weight	Ground Pressure
Type	Width mm(in)	kg (lb)	kgf/cm ² (psi)
Triple Grouser	600 (24")	50,690 (111,752)	0.88 (12.51)
	700 (28")	51,210 (112,898)	0.76 (10.83)
	800 (32")	51,740 (114,067)	0.67 (9.58)
Double Grouser	900 (36")	52,248 (115,187)	0.61 (8.60)
	600 (24")	50,722 (111,823)	0.88 (12.52)
	700 (28")	51,252 (112,991)	0.76 (10.84)

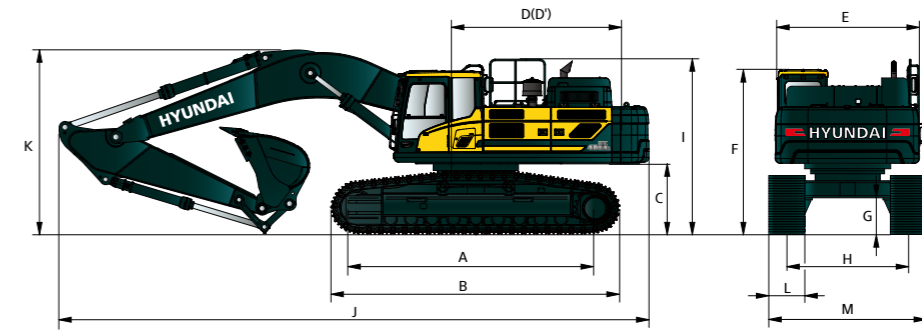
AIR CONDITIONING SYSTEM

The air condition system for the machine contains the fluorinated greenhouse gas with global warming potential of R134a. (Global Warming Potential : 1,430) The system hold 0.8 kg refrigerant consisting of a CO₂ equivalent of 1.21 kg. For more information, Please refer to the manual.

DIMENSIONS & WORKING RANGE

HX480A L DIMENSIONS

6.55 m (21' 6"), 7.06 m (23' 2"), 9.0 m (29' 6") boom and 2.4 m (7' 10"), 2.55 m (8' 4"), 2.9 m (9' 6"), 3.38 m (11' 1"), 4.0 m (13' 8"), 6.0 m (19' 8") arm



Unit : mm (ft-in)

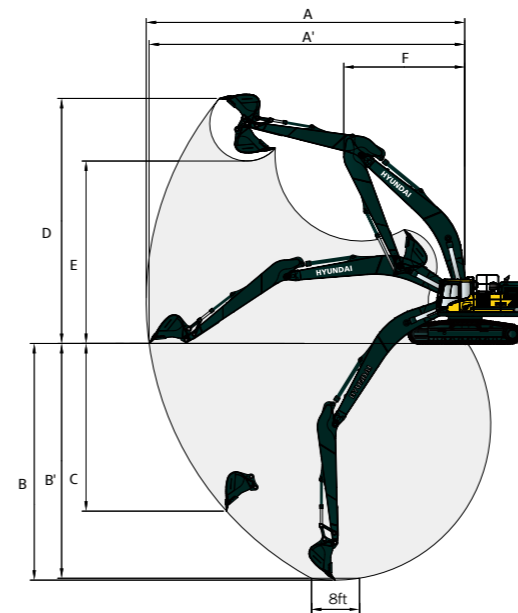
A Tumbler Distance	4,470 (14' 8")
B Overall Length of Crawler	5,416 (17' 9")
*C Ground Clearance of Counter Weight	1,295 (4' 3")
D Tail Swing Radius	3,800 (12' 6")
D' Rear-end Length	3,665 (12' 0")
E Overall Width of Upper Structure	2,980 (9' 9")
*F Overall Height of Cab	3,240 (10' 8")
G Min. Ground Clearance	560 (1' 10")
H Track gauge	2,740 (9' 0")
*I Overall Height of Guardrail	3,440 (11' 3")

	6,550 (21' 6")	7,060 (23' 2")	9,000 (29' 6")
Boom Length	6,550 (21' 6")	7,060 (23' 2")	9,000 (29' 6")
Arm Length	2,400 (7' 10") 2,550 (8' 4")	2,550 (8' 4") 2,900 (9' 6")	3,380 (11' 1") 4,000 (13' 1") 6,000 (19' 8")
J Overall Length	11,780 (38' 8") 11,600 (38' 1")	12,110 (39' 9") 12,170 (39' 11")	12,040 (39' 6") 12,010 (39' 5") 14,010 (46' 0")
*K Overall Height of Boom	4,100 (13' 5") 3,980 (13' 1")	3,920 (12' 10") 3,900 (12' 10")	3,790 (12' 5") 4,110 (13' 6") 3,990 (13' 1")
L Track Shoe Width	600 (24")	700 (28")	800 (32") 900 (36")
M Overall Width	3,340 (11' 0")	3,440 (11' 3")	3,540 (11' 7") 3,640 (11' 11")

* This figure includes the size of grousers.

HX480AL WORKING RANGE

Unit : mm (ft-in)



	6,550 (21' 6")	7,060 (23' 2")	9,000 (29' 6")
Boom length	6,550 (21' 6")	7,060 (23' 2")	9,000 (29' 6")
Arm length	2,400 (7' 10") 2,550 (8' 4")	2,550 (8' 4") 2,900 (9' 6")	3,380 (11' 1") 4,000 (13' 1") 6,000 (19' 8")
A Max. digging reach	10,650 (34' 11") 10,860 (35' 8")	11,410 (37' 5") 11,620 (38' 1")	12,040 (39' 6") 12,600 (41' 4") 16,180 (53' 1")
A' Max. digging reach on ground	10,430 (34' 3") 10,640 (34' 11")	11,200 (36' 9") 11,410 (37' 5")	11,840 (38' 10") 12,410 (40' 9") 16,030 (52' 7")
B Max. digging depth	6,420 (21' 1") 6,570 (21' 7")	6,930 (22' 9") 7,280 (23' 11")	7,760 (25' 6") 8,380 (27' 6") 12,020 (39' 5")
B' Max. digging depth (8' level)	6,240 (20' 6") 6,400 (21' 0")	6,760 (22' 2") 7,120 (23' 4")	7,620 (25' 0") 8,250 (27' 1") 11,920 (39' 1")
C Max. vertical wall digging depth	4,510 (14' 10") 5,550 (18' 3")	5,720 (18' 9") 5,800 (19' 0")	5,920 (19' 5") 6,470 (21' 3") 8,510 (27' 11")
D Max. digging height	10,170 (33' 4") 10,580 (34' 9")	11,110 (36' 5") 10,930 (35' 10")	11,030 (36' 2") 11,260 (36' 11") 12,610 (41' 4")
E Max. dumping height	6,850 (22' 6") 7,070 (23' 2")	7,570 (24' 10") 7,490 (24' 7")	7,640 (25' 1") 7,870 (25' 10") 9,410 (30' 10")
F Min. swing radius	4,730 (15' 6") 4,550 (14' 11")	4,780 (15' 8") 4,890 (16' 1")	4,770 (15' 8") 4,630 (15' 2") 6,040 (19' 10")

LIFTING CAPACITY

Rating over-front Rating over-side or 360 degree

HX480A L

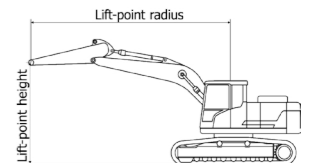
7.06 m (23' 2") boom, 4.00 m (13' 1") arm equipped with 600 mm (24") triple grouser shoe. (without bucket)

Lift-point height (m/ft)	Lift-point radius										Lift-point height (m/ft)	At max. reach					
	1.5 m (4.9 ft)		3.0 m (9.8 ft)		4.5 m (14.8 ft)		6.0 m (19.7 ft)		7.5 m (24.6 ft)			9.0 m (29.5 ft)		10.5 m (34.4 ft)		Capacity	Reach
	Rating over-front	Rating over-side or 360 degree	Rating over-front	Rating over-side or 360 degree	Rating over-front	Rating over-side or 360 degree	Rating over-front	Rating over-side or 360 degree	Rating over-front	Rating over-side or 360 degree		Rating over-front	Rating over-side or 360 degree	Rating over-front	Rating over-side or 360 degree	kg (lb)	m (ft)
9.0 m 29.5 ft	kg lb											9.0 m 29.5 ft	kg lb	*6,180 *13,620	*6,180 *13,620	8.20 (26.9)	
7.5 m 24.6 ft	kg lb										*7,300 *16,090	7.5 m 24.6 ft	kg lb	*5,890 *12,990	*5,890 *12,990	9.26 (30.4)	
6.0 m 19.7 ft	kg lb							*10,190 *22,470	*10,190 *22,470			6.0 m 19.7 ft	kg lb	*5,810 *12,810	*5,810 *12,810	9.98 (32.8)	
4.5 m 14.8 ft	kg lb					*13,110 *28,900	*13,110 *28,900	*11,120 *24,520	10,700 23,590			4.5 m 14.8 ft	kg lb	*5,900 *13,010	*5,900 *13,010	10.44 (34.3)	
3.0 m 9.8 ft	kg lb			*20,730 *45,700	*20,730 *45,700	*15,070 *33,220	14,140 31,170	*12,190 *26,870	10,190 22,470			3.0 m 9.8 ft	kg lb	*6,150 *13,560	5,890 12,990	10.67 (35.0)	
1.5 m 4.9 ft	kg lb			*22,090 *48,700	20,070 44,250	*16,670 *36,750	13,320 29,370	*13,120 *28,920	9,730 21,450			1.5 m 4.9 ft	kg lb	*6,580 *14,510	5,760 12,700	10.68 (35.0)	
Ground Line	kg lb			*20,410 *45,000	19,370 42,700	*17,500 *38,580	12,780 28,180	*13,690 *30,180	9,370 20,660			Ground Line	kg lb	*7,250 *15,980	5,830 12,850	10.47 (34.4)	
-1.5 m -4.9 ft	kg lb			*13,080 *28,840	*13,080 *28,840	*23,300 *51,370	19,170 42,260	*17,450 *38,470	12,510 27,580	*13,700 *30,200	9,170 20,220	-1.5 m -4.9 ft	kg lb	*8,310 *18,320	6,140 13,540	10.04 (32.9)	
-3.0 m -9.8 ft	kg lb	*14,790 *32,610	*14,790 *32,610	*19,130 *42,170	*19,130 *42,170	*21,470 *47,330	19,250 42,440	*16,480 *36,330	12,470 27,490	*12,990 *28,640	9,120 20,110	-3.0 m -9.8 ft	kg lb	*9,560 *21,080	6,800 14,990	9.34 (30.7)	
-4.5 m -14.8 ft	kg lb			*23,930 *52,760	*23,930 *52,760	*18,410 *40,590	*18,410 *40,590	*14,390 *31,720	12,640 27,870	*11,160 *24,600	9,250 20,390	-4.5 m -14.8 ft	kg lb	*9,370 *20,660	8,090 17,840	8.32 (27.3)	
-6.0 m -19.7 ft	kg lb			*13,470 *29,700	*13,470 *29,700	*10,400 *22,930	*10,400 *22,930					-6.0 m -19.7 ft	kg lb	*8,490 *18,720	*8,490 *18,720	6.82 (22.4)	

9.00 m (29' 7") boom, 6.00 m (19' 8") arm equipped with 600 mm (24") triple grouser shoe. (without bucket)

Lift-point height (m/ft)	Lift-point radius										Lift-point height (m/ft)	At max. reach														
	1.5 m (4.9 ft)		3.0 m (9.8 ft)		4.5 m (14.8 ft)		6.0 m (19.7 ft)		7.5 m (24.6 ft)			9.0m (29.5ft)		10.5m (34.4ft)		12.0m (39.4ft)		13.5m (44.3ft)		Capacity	Reach					
	Rating over-front	Rating over-side or 360 degree	Rating over-front	Rating over-side or 360 degree	Rating over-front	Rating over-side or 360 degree	Rating over-front	Rating over-side or 360 degree	Rating over-front	Rating over-side or 360 degree		Rating over-front	Rating over-side or 360 degree	Rating over-front	Rating over-side or 360 degree	Rating over-front	Rating over-side or 360 degree	Rating over-front	Rating over-side or 360 degree	kg (lb)	m (ft)					
10.5 m 34.4 ft	kg lb																			10.5 m 34.4 ft	kg lb	*2,480 *5,470	*2,480 *5,470	11.56 (37.9)		
9.0 m 29.5 ft	kg lb															*3,660 *8,070	*3,660 *8,070			9.0 m 29.5 ft	kg lb	*2,400 *5,290	*2,400 *5,290	12.52 (41.1)		
7.5 m 24.6 ft	kg lb															*5,020 *11,070	*5,020 *11,070			7.5 m 24.6 ft	kg lb	*2,370 *5,220	*2,370 *5,220	13.23 (43.4)		
6.0 m 19.7 ft	kg lb															*6,260 *13,800	*6,260 *13,800	*5,830 *12,850	5,260 11,600	6.0 m 19.7 ft	kg lb	*2,400 *5,290	*2,400 *5,290	13.75 (45.1)		
4.5 m 14.8 ft	kg lb															*7,510 *16,560	*7,510 *16,560	*6,690 *14,750	6,420 14,150	4.5 m 14.8 ft	kg lb	*2,470 *5,450	*2,470 *5,450	14.08 (46.2)		
3.0 m 9.8 ft	kg lb			*17,810 *39,260	*17,810 *39,260	*12,560 *27,690	*12,560 *27,690	*9,870 *21,760	*9,870 *21,760								*8,240 *18,170	7,780 17,150	*7,160 *15,790	6,090 13,430	3.0 m 9.8 ft	kg lb	*2,590 *5,710	*2,590 *5,710	14.25 (46.7)	
1.5 m 4.9 ft	kg lb			*11,630 *25,640	*11,630 *25,640	*14,190 *31,280	12,900 28,440	*10,900 *24,030	9,480 20,900								*8,920 *19,670	7,290 16,070	*7,610 *16,780	5,760 12,700	1.5 m 4.9 ft	kg lb	*2,770 *6,110	*2,770 *6,110	14.26 (46.8)	
Ground Line	kg lb			*10,370 *22,860	*10,370 *22,860	*15,210 *33,530	12,020 26,500	*11,660 *25,710	8,870 19,550								*9,450 *20,830	6,870 15,150	*7,960 *17,550	5,470 12,060	Ground Line	kg lb	*3,020 *6,660	*3,020 *6,660	14.10 (46.3)	
-1.5 m -4.9 ft	kg lb	*5,890 *12,990	*5,890 *12,990	*7,150 *15,760	*7,150 *15,760	*11,470 *25,290	*11,470 *25,290	*15,590 *34,370	11,520 25,400	*12,070 *26,610	8,460 18,650	-1.5 m -4.9 ft	kg lb	*9,770 *21,540	6,560 14,460	*8,180 *18,030	5,250 11,570	*7,010 *15,450	4,280 9,440	*4,830 *10,650	3,540 7,800	-1.5 m -4.9 ft	kg lb	*3,370 *7,430	*3,370 *7,430	13.79 (45.2)
-3.0 m -9.8 ft	kg lb	*7,980 *17,590	*7,980 *17,590	*9,520 *20,990	*9,520 *20,990	*13,520 *29,810	*13,520 *29,810	*15,430 *34,020	11,300 24,910	*12,100 *26,680	8,230 18,140	-3.0 m -9.8 ft	kg lb	*9,830 *21,670	6,370 14,040	*8,200 *18,080	5,100 11,240	*6,950 *15,320	4,190 9,240			-3.0 m -9.8 ft	kg lb	*3,860 *8,510	3,590 7,910	13.29 (43.6)
-4.5 m -14.8 ft	kg lb	*10,200 *22,490	*10,200 *22,490	*12,070 *26,610	*12,070 *26,610	*16,210 *35,740	*16,210 *35,740	*14,770 *32,560	11,270 24,850	*11,740 *25,880	8,150 17,970	-4.5 m -14.8 ft	kg lb	*9,580 *21,120	6,290 13,870	*7,960 *17,550	5,050 11,130	*6,610 *14,570	4,170 9,190			-4.5 m -14.8 ft	kg lb	*4,610 *10,160	3,900 8,600	12.60 (41.3)
-6.0 m -19.7 ft	kg lb	*12,580 *27,730	*12,580 *27,730	*14,900 *32,850	*14,900 *32,850	*17,400 *38,360	*17,400 *38,360	*13,600 *29,980	11,400 25,130	*10,940 *24,120	8,210 18,100	-6.0 m -19.7 ft	kg lb	*8,940 *19,710	6,320 13,930	*7,330 *16,160	5,090 11,220					-6.0 m -19.7 ft	kg lb	*5,810 *12,810	4,420 9,740	11.67 (38.3)
-7.5 m -24.6 ft	kg lb			*18,180 *40,080	*18,180 *40,080	*14,800 *32,630	*14,800 *32,630	*11,810 *26,040	11,680 25,750	*9,570 *21,100	8,400 18,520	-7.5 m -24.6 ft	kg lb	*7,740 *17,060	6,490 14,310							-7.5 m -24.6 ft	kg lb	*6,070 *13,380	5,320 11,730	10.44 (34.3)
-9.0 m -29.5 ft	kg lb			*11,160 *24,600	*11,160 *24,600	*9,100 *20,060	*9,100 *20,060	*7,290 *16,070	*7,290 *16,070												-9.0 m -29.5 ft	kg lb	*5,710 *12,590	*5,710 *12,590	8.79 (28.8)	

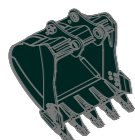
- Lifting capacity are based on ISO 10567.
- Lifting capacity of HX-LT3 Series does not exceed 75% of tipping load with the machine on firm, level ground or 87% of full hydraulic capacity.
- The Lift-point is bucket pivot mounting pin on the arm(without bucket mass).
- (*) indicates load limited by hydraulic capacity.



BUCKET SELECTION GUIDE & DIGGING FORCE

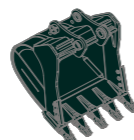
BUCKETS

All buckets are welded with high-strength steel.

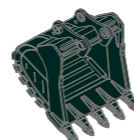


SAE heaped
m³ (yd³)

*GP
1.38 (1.80)
2.20 (2.88)
3.00 (3.92)



*HD
2.20 (2.88)
2.79 (3.65)



*Rock-HD
2.20 (2.88)
2.43 (3.18)
2.79 (3.65)
3.20 (4.19)

Capacity m ³ (yd ³)		Width mm (in)	Weight kg (lb)	Tooth (EA)	Recommendation mm (ft.in)						
					6,550 (21' 6") Boom		7,060 (23' 2") Boom			9,000 (29' 6") Boom	
SAE Heaped	CECE Heaped				2,400 (7' 10") Arm	2,550 (8' 4") Arm	2,550 (8' 4") Arm	2,900 (9' 6") Arm	3,380 (11' 1") Arm	4,000 (13' 1") Arm	6,000 (19' 8") Arm
(G) 1.38 (1.80)	1.24 (1.62)	1,135 (45")	1,670 (3,680)	4	●	●	●	●	●	●	▲
(G) 2.20 (2.88)	1.93 (2.52)	1,575 (62")	2,030 (4,480)	5	●	●	●	●	●	■	×
(G) 3.00 (3.92)	2.70 (3.53)	1,905 (75")	2,460 (5,420)	6	●	○	■	■	▲	▲	×
(H) 2.20 (2.88)	1.93 (2.52)	1,605 (63")	2,320 (5,110)	5	●	●	●	●	○	■	×
(H) 2.79 (3.65)	2.47 (3.23)	1,785 (70")	2,630 (5,800)	5	●	○	■	■	▲	▲	×
(R) 2.20 (2.88)	1.93 (2.52)	1,605 (63")	2,610 (5,750)	5	●	●	●	○	○	×	×
(R) 2.43 (3.18)	2.11 (2.76)	1,750 (69")	2,730 (6,020)	5	●	●	○	○	■	×	×
(R) 2.79 (3.65)	2.47 (3.23)	1,785 (70")	2,950 (6,500)	5	●	○	■	■	▲	×	×
(R) 3.20 (4.19)	2.82 (3.69)	1,995 (79")	3,230 (7,120)	6	○	■	▲	▲	×	×	×

- (G) General Purpose
- (H) Heavy Duty
- (R) Rock-HD
- : Applicable for materials with density of 2,100 kg/m³ (3,500 lb/yd³) or less
- : Applicable for materials with density of 1,800 kg/m³ (3,000 lb/yd³) or less
- : Applicable for materials with density of 1,500 kg/m³ (2,500 lb/yd³) or less
- ▲ : Applicable for materials with density of 1,200 kg/m³ (2,000 lb/yd³) or less
- × : Not Recommended

ATTACHMENT

Booms and arms are of all-welded, low-stress, full-box section design. 6,550 mm (21' 6"), 7,060 mm (23' 2"), 9,000 mm (29' 6") boom and 2,400 mm (7' 10"), 2,550 mm (8' 4"), 2,900 mm (9' 6"), 3,380 mm (11' 1"), 4,000 mm (13' 1"), 6,000 mm (19' 8") arms are available, Hyundai Bucket are all-welded, high-strength steel implements.

DIGGING FORCE

Boom	Length mm (ft.in)	6,550 (21' 6")				7,060 (23' 2")				9,000 (29' 6")	Remark
		Weight kg (lb)									
Arm	Length mm (ft.in)	2,400 (7' 10")	2,550 (8' 4")	2,550 (8' 4")	2,900 (9' 6")	3,380 (11' 1")	4,000 (13' 1")	6,000 (19' 8")		[]: Power Boost	
		Weight kg (lb)	2,390 (5,270)	2,350 (5,180)	2,350 (5,180)	2,590 (5,710)	2,630 (5,800)	2,720 (6,000)	3,290 (7,250)		
Bucket Digging Force	SAE	kN	241.2 [263.2]	211.8 [231.0]	211.8 [231.0]	211.8 [231.0]	213.8 [233.2]	215.7 [235.4]	216.7		
		kgf	24,600 [26,840]	21,600 [23,560]	21,600 [23,560]	21,600 [23,560]	21,800 [23,780]	22,000 [24,000]	22,100		
	ISO	kN	280.5 [306.0]	246.2 [268.5]	246.2 [268.5]	246.2 [268.5]	248.1 [270.7]	250.1 [272.8]	252.0		
		kgf	28,600 [31,200]	25,100 [27,380]	25,100 [27,380]	25,100 [27,380]	25,300 [27,600]	25,500 [27,820]	25,700		
		kN	274.6 [299.6]	232.7 [253.9]	232.7 [253.9]	220.7 [240.8]	191.2 [208.6]	170.6 [186.1]	121.6		
		kgf	28,000 [30,550]	23,730 [25,890]	23,730 [25,890]	22,500 [24,550]	19,500 [21,270]	17,400 [18,980]	12,400		
Arm Crowd Force	ISO	kN	287.3 [313.4]	243.2 [265.3]	243.2 [265.3]	229.5 [250.4]	198.1 [216.1]	176.5 [192.6]	124.5		
		kgf	29,300 [31,960]	24,800 [27,050]	24,800 [27,050]	23,400 [25,530]	20,200 [22,040]	18,000 [19,640]	12,700		
		lbf	64,600 [70,460]	54,670 [59,630]	54,670 [59,630]	51,590 [56,280]	44,530 [48,590]	39,680 [43,300]	28,000		

Note : Boom weight includes arm cylinder, piping, and pin
Arm weight includes bucket cylinder, linkage, and pin

STANDARD / OPTION

ENGINE	STD	OPT
Cummins X12	●	
HYDRAULIC SYSTEM		
INTELLIGENT POWER CONTROL (IPC)		
3-Power Mode, 2-Work Mode, User Mode	●	
Variable Power Control	●	
Pump Flow Control (Upgraded IPC)	●	
Attachment Mode Flow Control		●
Engine Auto Idle	●	
Engine Auto Shutdown Control	●	
CAB & INTERIOR		
ISO STANDARD CABIN		
Cabin Lights (LED)		●
Cabin Front Window Rain Guard		●
Cabin Roof-Steel Cover		●
Rise-Up Type Windshield Wiper	●	
Radio / USB Player	●	
Handsfree Mobile Phone System with USB	●	
12 V Power Outlet (24 V DC to 12 V DC Converter)	●	
Electric Horn	●	
All-Weather Steel Cab with 360° Visibility	●	
Safety glass - Tempered glass	●	
Safety glass - Tempered glass with front laminated glass		●
Safety glass windows	●	
Sliding Fold-In Front Window	●	
Sliding Side Window (LH)	●	
Lockable Door	●	
Hot & Cool Box	●	
Storage Compartment	●	
Ashtray & Ashtray		●
Transparent Cabin Roof-Cover	●	
Sun Visor	●	
Door and Cab Locks, One Key	●	
Pilot-Operated Slidable Joystick	●	
Console Box Height Adjust System	●	
AUTOMATIC CLIMATE CONTROL		
Air Conditioner & Heater	●	
Defroster	●	
AUTOMATIC STARTING AID(AIR GRID HEATER) FOR WEATHER		
Starting Aid (Air Grid Heater) for Cold Weather	●	
CENTRALIZED MONITORING		
8" LCD Display	●	
Engine Speed or Trip Meter / Accel	●	
Engine Coolant Temperature Gauge	●	
Max Power	●	
Low Speed / High Speed	●	
Auto Idle	●	
Overload warning with alarm		●
Check Engine	●	
Air Cleaner Clogging	●	
Indicators	●	
Eco Gauges	●	
Fuel Level Gauge	●	
Hyd. Oil Temperature Gauge	●	
Fuel Warmer	●	
Warnings	●	
Communication Error	●	
Low Battery	●	
Clock	●	
SEAT		
Mechanical Suspension with Heater	●	
Adjustable Air Suspension without Heater		●
Adjustable Air Suspension with Heater		●
CABIN FOG (ISO 10262) LEVEL 2		
FOG (Falling Object Guard)	Front & Tops Guard	●
	Top Guard	●
CABIN ROPS (ISO 12117-2)		
ROPS (Roll Over Protective Structures)	●	

SAFETY	STD	OPT
Battery Master Switch	●	
Rearview Camera		●
AAVM (Advanced Around View Monitoring)		●
Six Front Working Lights (4 Boom Mounted, 2 Front Frame Mounted)	●	
Travel Alarm	●	
Rear Work		●
Beacon Lamp		●
Automatic Swing Brake	●	
Boom Holding System	●	
Arm Holding System	●	
Safety Lock Valve for Boom Cylinder with Overload Warning Device		●
Safety Lock Valve for Arm Cylinder		●
Swing Lock System		●
Two Outside Rearview Mirror	●	
OTHERS		
Removable Clean-Out Dust Net for Cooler	●	
Removable Washer Tank	●	
Fuel Pre-Filter	●	
Fuel Warmer	●	
Self-Diagnostics System	●	
Hi MATE (Remote Management System)		●
Batteries (2 × 12 V × 200 AH)	●	
Fuel Filler Pump (50 lpm)		●
Single-Acting Piping Kit (Breaker, etc.)		●
Double-Acting Piping Kit (Clamshell, etc.)		●
Rotating Piping Kit		●
Quick Coupler Piping		●
Quick Coupler		●
Boom Floating Control		●
Fine Swing Control		●
One Pedal Straight Travel System		●
Accumulator for Lowering Work Equipment	●	
Pattern Change Valve (2 Patterns)		●
Semi-Auto Grease(Pump&Gun)		●
Removal CWT		●
Air Cleaner - Wet		●
Tool Kit		●
ATTACHMENT		
BOOMS		
6.55 m, 21' 6"		●
7.06 m, 23' 2"	●	
9.00 m, 29' 7"		●
ARMS		
2.40 m, 7' 10"		●
2.55 m, 8' 4"		●
2.90 m, 9' 6"		●
3.38 m, 11' 1"	●	
4.00 m, 13' 1"		●
6.00 m, 19' 8"		●
UNDERCARRIAGE		
Lower Frame Under Cover (Additional)		●
Lower Frame Under Cover (Normal)	●	
TRACK SHOES		
Triple Grousers Shoes (600 mm, 24")	●	
Triple Grousers Shoe (700 mm, 28")		●
Triple Grousers Shoe (800 mm, 32")		●
Triple Grousers Shoe (900 mm, 36")		●
Double Grousers Shoe (600 mm, 24")		●
Double Grousers Shoe (700 mm, 28")		●
Track Rail Guard	●	
Full Track Rail Guard		●
3piece Type Track Guard		●

MEMO
